

MUTOH



XpertJet

XPJ-1682WR



Indoor & Digital Transfer



High Quality Dye Sublimation Printer

Mutoh's new XpertJet 1682WR 64" (162 cm) wide dye sublimation printer will deliver exceptional performance and great value. As the successor to Mutoh's popular ValueJet 1638WX, the 1682WR sits on our brand new XpertJet print platform and is ideally suited to interior décor, custom apparel, soft signage, sportswear, personalised promotional products, giftware and more.

Focused at print providers requiring speed who also put high quality at the top of their wish list, the 1682WR features two gold plated piezo variable drop print heads producing stunning results in both 4 colour and 8 colour ink setup.

Cleverly designed, the XpertJet 1682WR features multiple product enhancements which will deliver optimum quality results and an excellent user experience. A newly developed multi-stage pressure roller system will enhance media feed stability for a wide range of sublimation papers. Rolls can be easily installed thanks to a new roll off system and newly developed media flanges. Continuous printing is made possible with the different motorized take-up systems available for roll weights up to 30, 40 or 100 kg.

Product Highlights

- The successor to Mutoh's popular, award winning ValueJet 1638WX
- Transfer sublimation printing up to 1625 mm (63.97")
- Two gold plated piezo drop on demand heads on board, drop sizes from 2.8 pl to 33.9 pl
- Typical production speeds between 10 m²/h and 48 m²/h
- 2x4 or up to 8 colour setup
- Enhanced media handling & transport
- Ready for volume printing : 30, 40 or 100 kg motorized take up systems
- Environmentally friendly printing - high level of operator safety

Application Possibilities

In-store textile décor graphics and displays, personalised home decoration, textile banners, fast fashion, shirts and sportswear and much more. Personalised products on all types of polyester coated or polyester based rigids, gadgets and flexible materials.



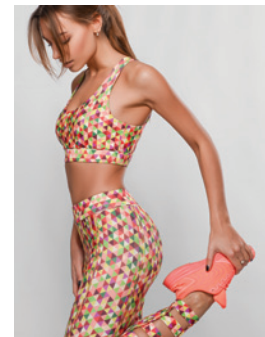


64" Dye Sublimation Printer



Excellent user experience and optimum quality outputs

- High precision aluminium rail mechanism for extremely accurate ink dot placement and stable printing
- Improved media feed mechanism with newly designed media feed flanges and multi-level pinch rollers with adaptable pressure and individual disable function for worry-free media transport
- Illuminated print platform and new intuitive OLED display
- Mutoh Intelligent Interweaving on board to deliver spot on print quality
- Automated bi-directional alignment and media feed adjustment via built-in colour sensor.
- Media Tracker feature to easily track remaining media left on a part-used roll



Technical Key Specifications

Print Technology	Drop-on-demand Micro Piezo Inkjet Technology
Print Head	2 (staggered setup)
Nozzle Configuration	180 nozzles x 8 lines / head
Drop Mass Range	2.8 to 33.9 pl
Resolution Range	360 x 360 dpi up to 1440 x 1440 dpi
Head Heights	Low: 1.5 mm / Middle: 2.5 mm / High: 4.0 mm

Media Specifications

Media Width	500 mm (19.96") - 1625 mm (63.97")
Max. Print Width	1615 mm (63.58")
Max. Media Thickness	0.3 / 1.3 / 2.8 mm *

* : Max. media thickness is specified per head height

Compatible Roll Diameter	30 kg	40 kg	100 kg
Roll-off (mm)	Ø 150	Ø 150	Ø 250
Take-Up (mm)	Ø 150	Ø 250 *	Ø 250

* : Standard converted rolls may increase in diameter and weight during printing. To handle full rolls from start to end, a winder 40 kg is recommended.

Media Core Compatibility	2" & 3"
Automatic Sheet-off Mechanism	Yes

Power Consumption

During Printing	180 W
in Stand-by / Power Off	40 W / 1 W
Power Supply	AC 100-120 V / AC 200-240 - 60/50 Hz
Noise (dB)	± 70.4 (printing) / ± 64.2 (standby)

Machine Measurements

Width x Depth x Height	2698 x 885 x 1261 mm
Weight	219 kg

Recommended Printing Environment

Temperature	20 °C - 30 °C with Δt: max. 2 °C/h
Humidity	40 % - 60 % RH (no condensation) with ΔRH: max. 5 % RH/h

